

Thousands
of solutions.
Endless
configurations.
Infinite
applications.

Industry-Leading Support

- > Online part configuration – extremely customizable products with a wide variety of options
- > Access to an expansive 2D/3D CAD file library online
- > Real-time price, availability, and delivery information on bimba.com
- > Manufactured to the strictest standards with ISO 9001 certification
- > Tested for heat, fatigue and life span to ensure the best in quality and durability

Cutting-Edge Technology

- > Multiple product lines feature industry-leading product breadth to serve a complete range of market segments
- > All products are engineered to provide superior life expectancy and world-class quality
- > NFPA and ISO product lines provide customers the ability to meet both domestic and international dimensional interchange requirements
- > As the originator of the non-repairable round line cylinder, Bimba is the undisputed market leader in this space

IMI Precision Engineering operates four global centres of technical excellence and a sales and service network in 75 countries, as well as manufacturing capability in the USA, Germany, China, UK, Switzerland, Czech Republic, Mexico and Brazil.

For information on all IMI Precision Engineering companies visit www.imi-precision.com

Supported by distributors worldwide.



Due to our policy of continuous development, Bimba reserve the right to change specifications without prior notice.

Selected Images used under license from Shutterstock

Bimba
25150 S. Governors Hwy
University Park, IL 60484
Tel: +1 708 534 8544
Fax: +1 708 235 2014
www.bimba.com

Bimba is part of
IMI Precision Engineering

BRO-BIM-PA-0618



Pneumatic Actuators



*We make
things MOVE®*



**We know
Pneumatics**



*We make
things MOVE®*

Bimba is part of
IMI Precision Engineering

Round Line



FEATURES & BENEFITS

- > Option rich Original Line cylinders with bore sizes ranging from 5/16" to 3" to accommodate a variety of applications
- > 3000 mile life rating for non-repairable designs means long-lasting cylinders and less downtime
- > Round line non-repairable cylinders in compliance with ISO 6432 standards are available

MODELS



Original Line®
Stainless steel body, non-repairable cylinders

ISO
Globally interchangeable cylinders

Centaur
Repairable, economical round body cylinders

NFPA



FEATURES & BENEFITS

- > NFPA tie rod air cylinders are available in 10 bore sizes up to 12", providing design engineers a wide range of available forces
- > NFPA designs accommodate up to 1,500 PSI (3,000 PSI for high pressure applications)
- > Six Double-Wall® NFPA mounting styles allow easy pre-existing NFPA replacement
- > USDA-approved repairable stainless steel cylinders accommodate a range of force requirements while offering a sleek design perfect for washdown or food applications

MODELS



Repairable
USDA-approved stainless steel cylinders

Double-Wall®
Medium duty, NFPA interchangeable cylinders

Compact



FEATURES & BENEFITS

- > Flat-1® cylinders have extended life and a repairable design for improved performance
- > Flats offer a variety of standard options, giving customers the ability to find the right fit for their application
- > Extruded body cylinders have body-embedded tracks for low profile switch mounting
- > Twin Bore series achieves higher forces with a low profile for tight spaces using a dual bore
- > Air table actuators provide the benefits of a low profile design with higher precision

MODELS

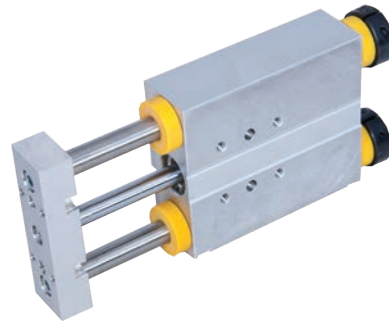


Flat-1®
Round body cylinders

EF1
Aluminum extruded body cylinders

Twin Bore
Low profile slides

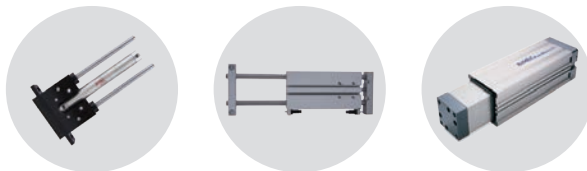
Guided



FEATURES & BENEFITS

- > Extruded Thrusters incorporate a cylinder in the thruster block for space efficiency in a guided design
- > TE series uses composite bearings, allowing for high side load and moments, but they may also perform better in applications exposed to dust, lint, etc.
- > T series uses ball bearings, reducing friction and deflection for more precise movement
- > Bimba PneuMoment actuators are compact with high moment load capacity for heavier duty applications

MODELS



Linear Thrusters

Extruded Thrusters

PneuMoment®
Extruded body heavy duty actuators

Rodless



FEATURES & BENEFITS

- > Available either mechanically or magnetically coupled so customers can select a design that best fits their requirements
- > Lack of cylinder rod provides linear motion in shorter envelope than conventional rod styles
- > Magnetically coupled available in 9 bores from 5/16" to 2" for a variety of force requirements
- > Mechanically coupled features a specially designed sealing strip that offers the lowest leakage rates compared to similar designs
- > Unique five-ported endcaps provide maximum plumbing flexibility

MODELS

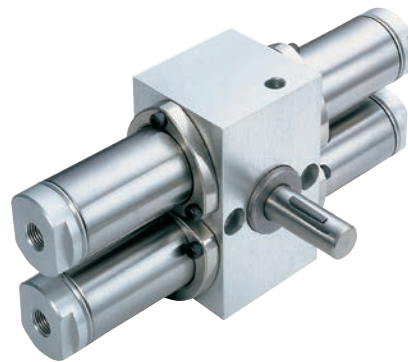


Ultraneer®
Magnetically coupled cylinders

Ultraneer®
Magnetically coupled non-rotating cylinders

Ultraneer® Band
Mechanically coupled band-mounted cylinders

Rotary



FEATURES & BENEFITS

- > Rack & pinion designs available up to 1080°
- > Double rack designs double the rotational torque output of a given bore size
- > Available in 3-Position, Position Feedback, and hydraulic service designs for maximum design flexibility
- > Rotary index tables with 190° rotation offer compact alternatives to traditional designs
- > Standard anti-backlash option provides greater rotational precision

MODELS



Pneu-Turn®
Rack and pinion style actuators

Rotary Table